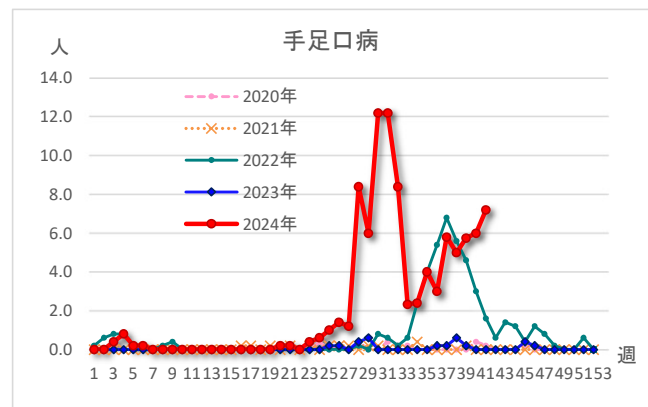
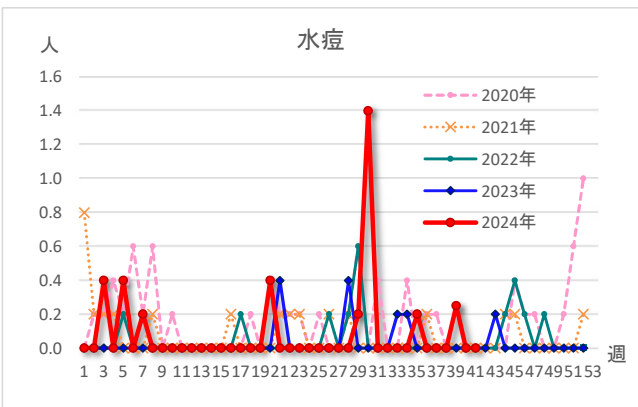
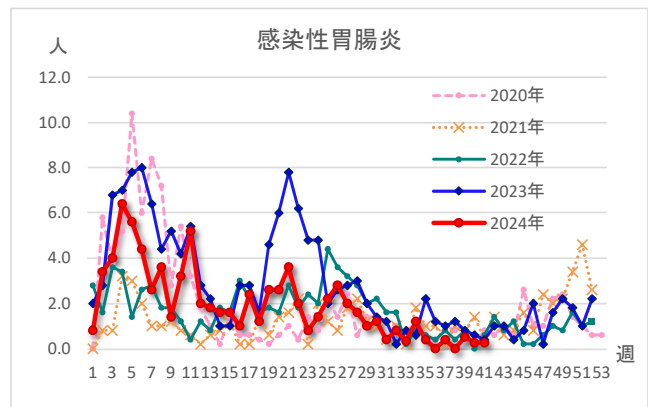
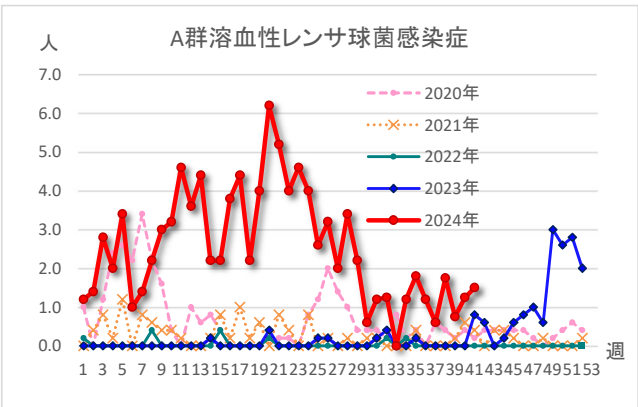
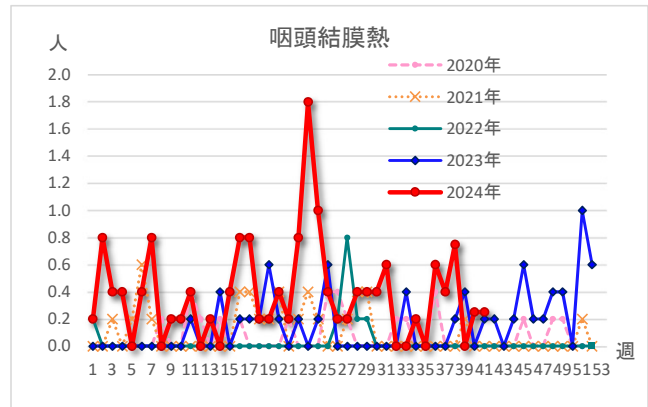
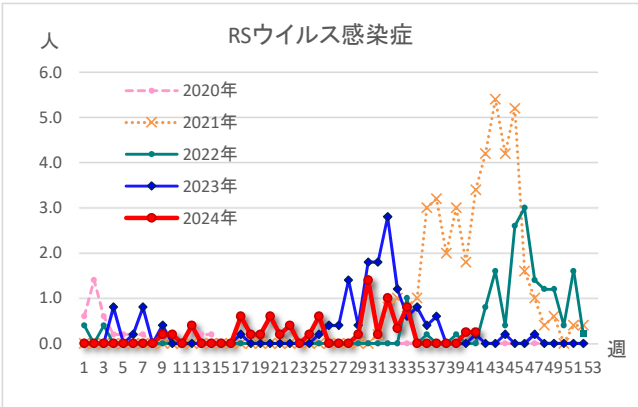
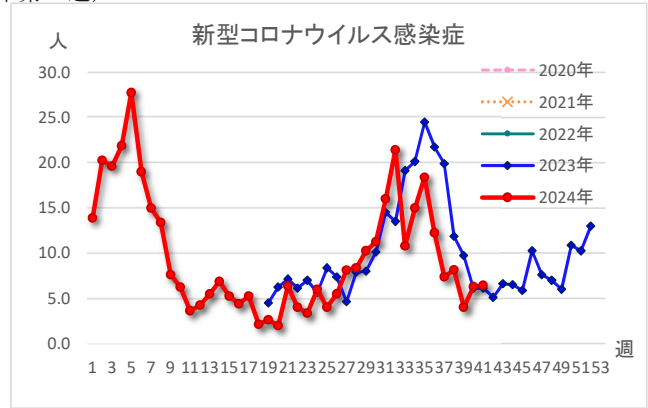
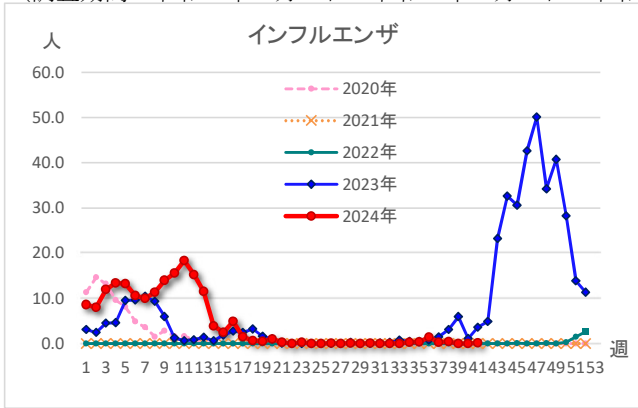
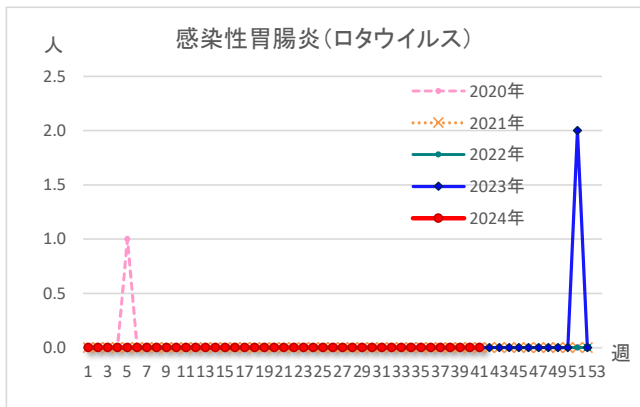
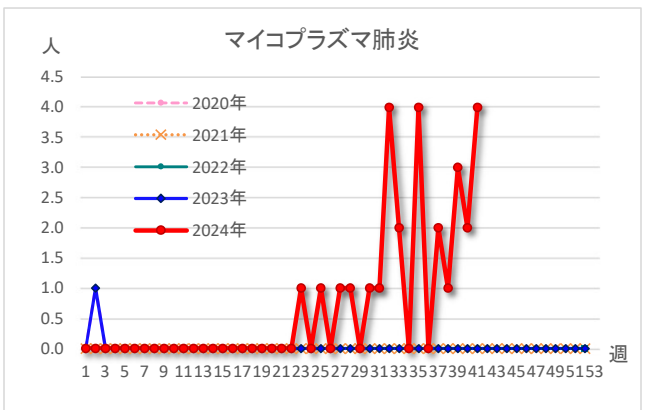
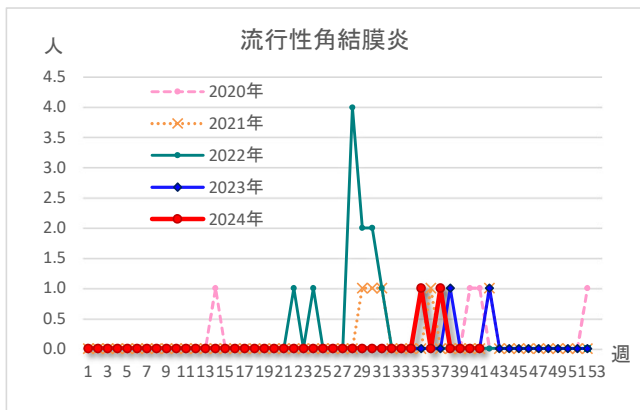
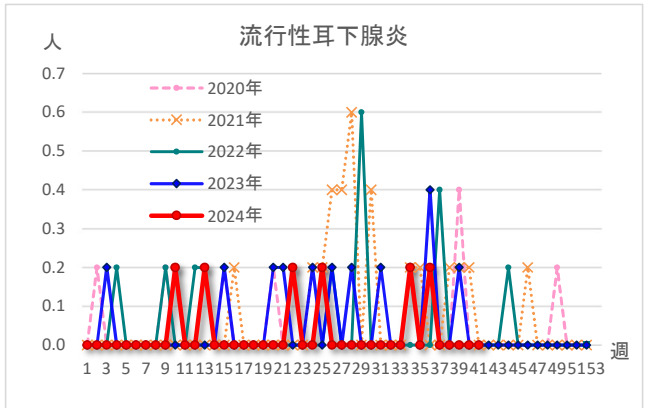
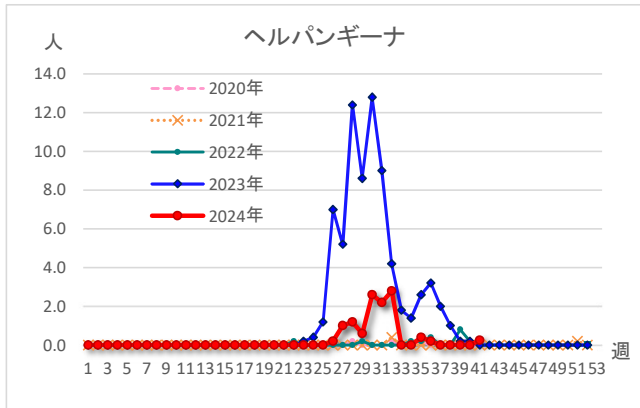
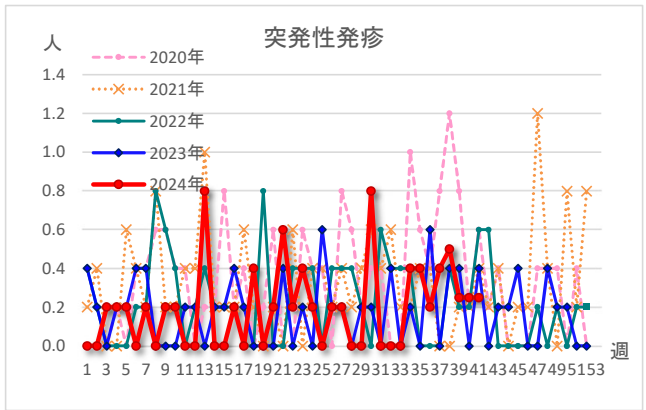
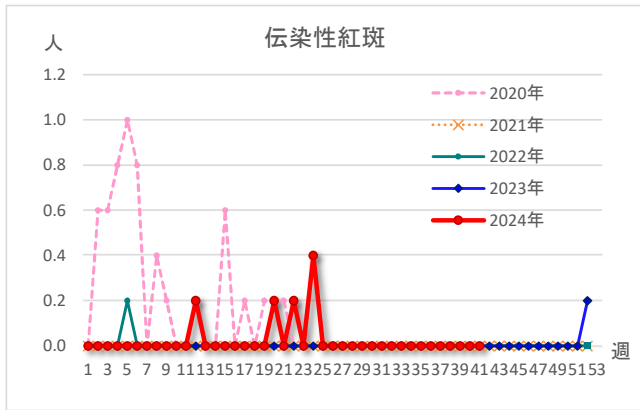


感染症発生動向推移（定点当たり）

長野県諏訪保健所

(調査期間：令和6年10月7日～令和6年10月13日 令和6年第41週)





(問合せ先)
 健康づくり支援課 予防衛生係
 電話 0266-57-2926(直通)
 F A X 0266-57-2953
 Email suwaho-kenko@pref.nagano.lg.jp