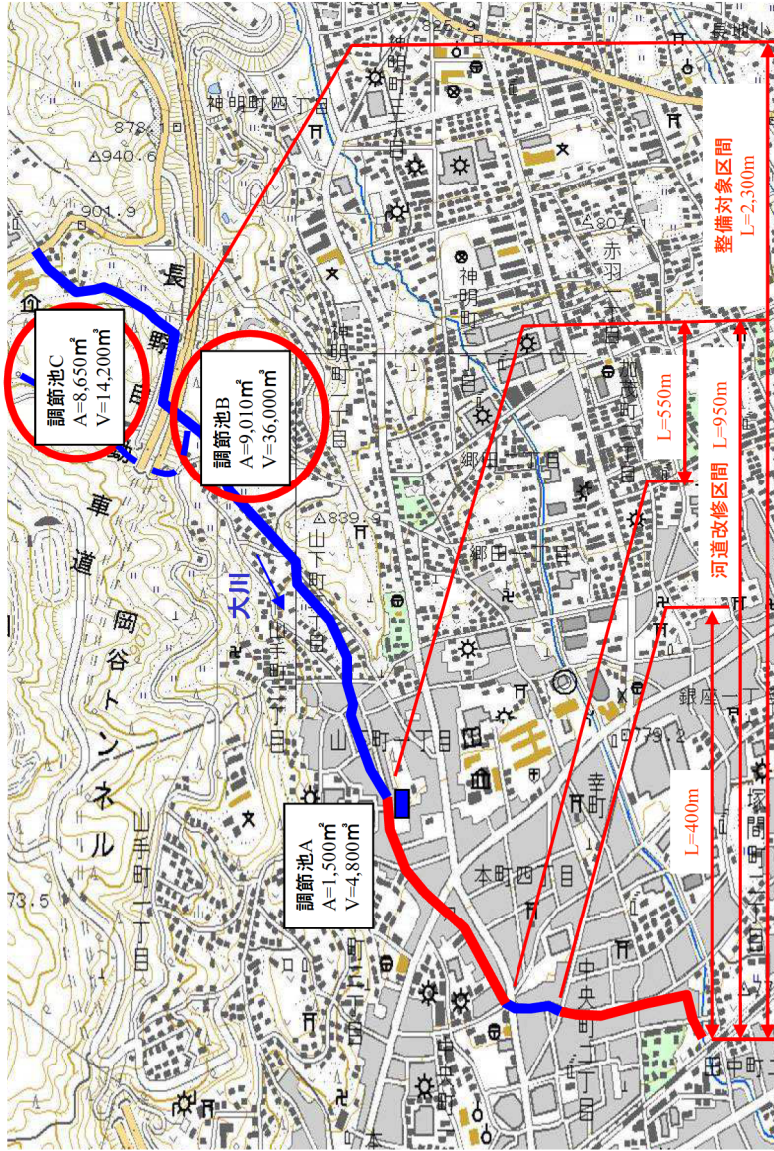
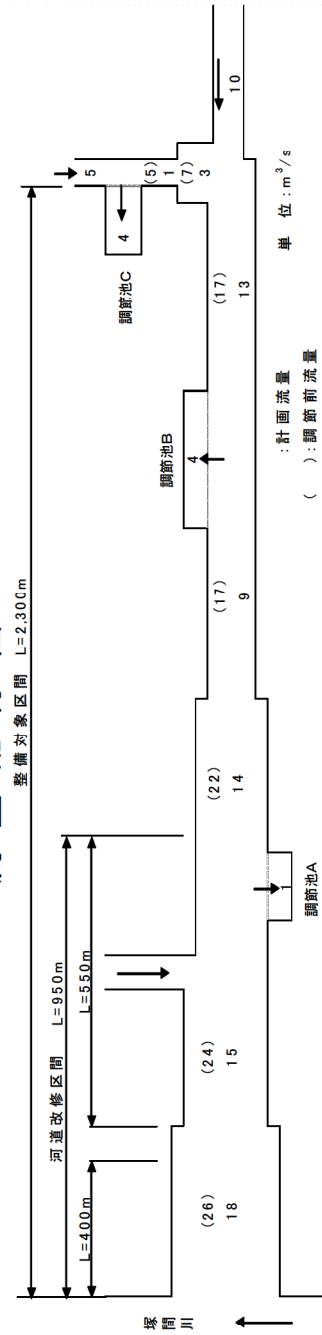


大川 平面図

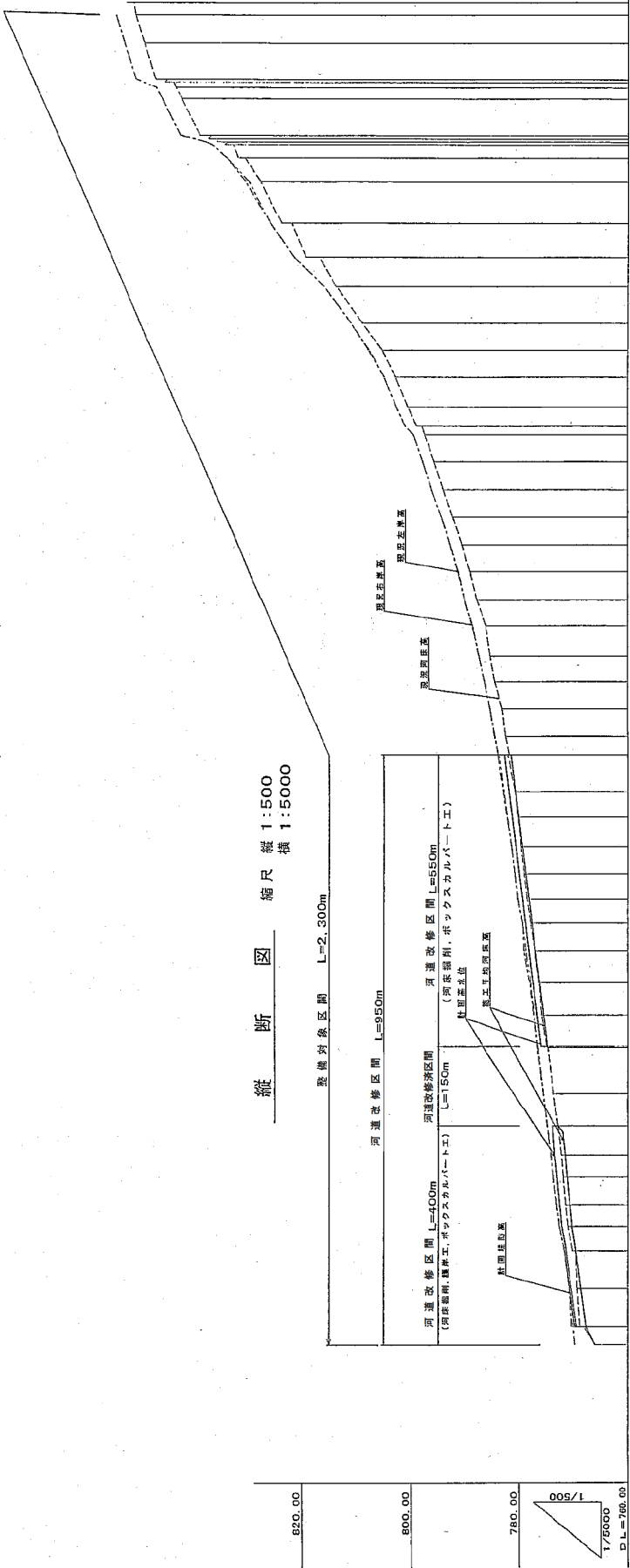


流量配分図



大川

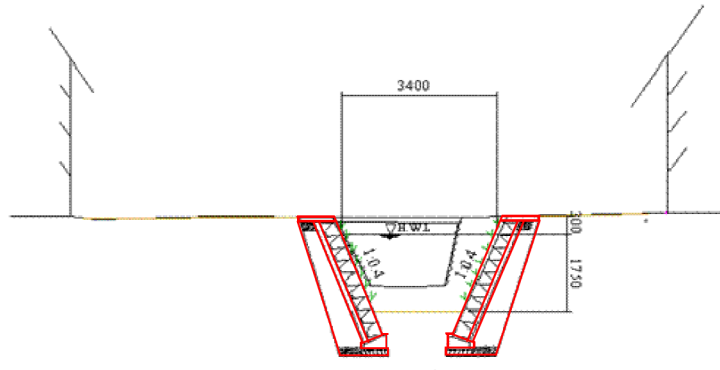
縦断図 縮尺 縦 1:500 横 1:5000



区間	No.	左岸	右岸	河床	堤防	備考
河床位置	NO.0	760.75	770.24	770.01	767.88	
	NO.1	760.01	770.24	770.01	767.88	
	NO.2	760.01	770.24	770.01	767.88	
	NO.3	760.01	770.24	770.01	767.88	
	NO.4	760.01	770.24	770.01	767.88	
	NO.5	760.01	770.24	770.01	767.88	
	NO.6	760.01	770.24	770.01	767.88	
	NO.7	760.01	770.24	770.01	767.88	
	NO.8	760.01	770.24	770.01	767.88	
	NO.9	760.01	770.24	770.01	767.88	
堤防	NO.10	760.01	770.24	770.01	767.88	
	NO.11	760.01	770.24	770.01	767.88	
	NO.12	760.01	770.24	770.01	767.88	
	NO.13	760.01	770.24	770.01	767.88	
	NO.14	760.01	770.24	770.01	767.88	
	NO.15	760.01	770.24	770.01	767.88	
	NO.16	760.01	770.24	770.01	767.88	
	NO.17	760.01	770.24	770.01	767.88	
	NO.18	760.01	770.24	770.01	767.88	
	NO.19	760.01	770.24	770.01	767.88	
河床位置	NO.20	760.01	770.24	770.01	767.88	
	NO.21	760.01	770.24	770.01	767.88	
	NO.22	760.01	770.24	770.01	767.88	
	NO.23	760.01	770.24	770.01	767.88	
	NO.24	760.01	770.24	770.01	767.88	
	NO.25	760.01	770.24	770.01	767.88	
	NO.26	760.01	770.24	770.01	767.88	
	NO.27	760.01	770.24	770.01	767.88	
	NO.28	760.01	770.24	770.01	767.88	
	NO.29	760.01	770.24	770.01	767.88	

大川標準横断面図

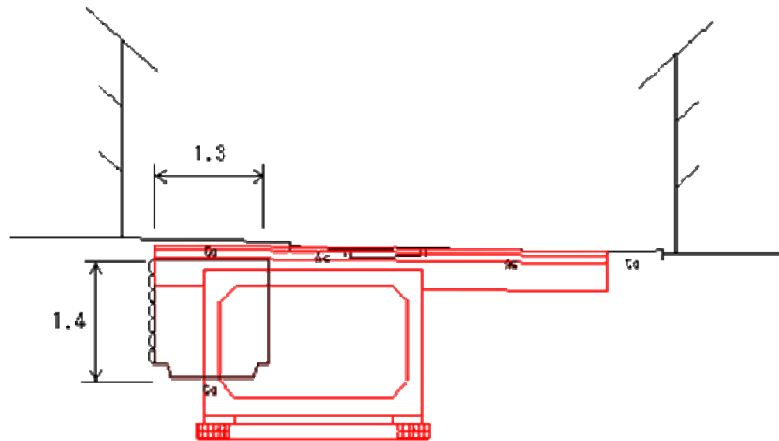
塚間川合流点上流約 100m付近



(イメージ図)

○河川環境の保全に配慮した工法を採用し、河岸の緑化や景観、親水性に配慮する。

塚間川合流点上流約 820m付近



(イメージ図)