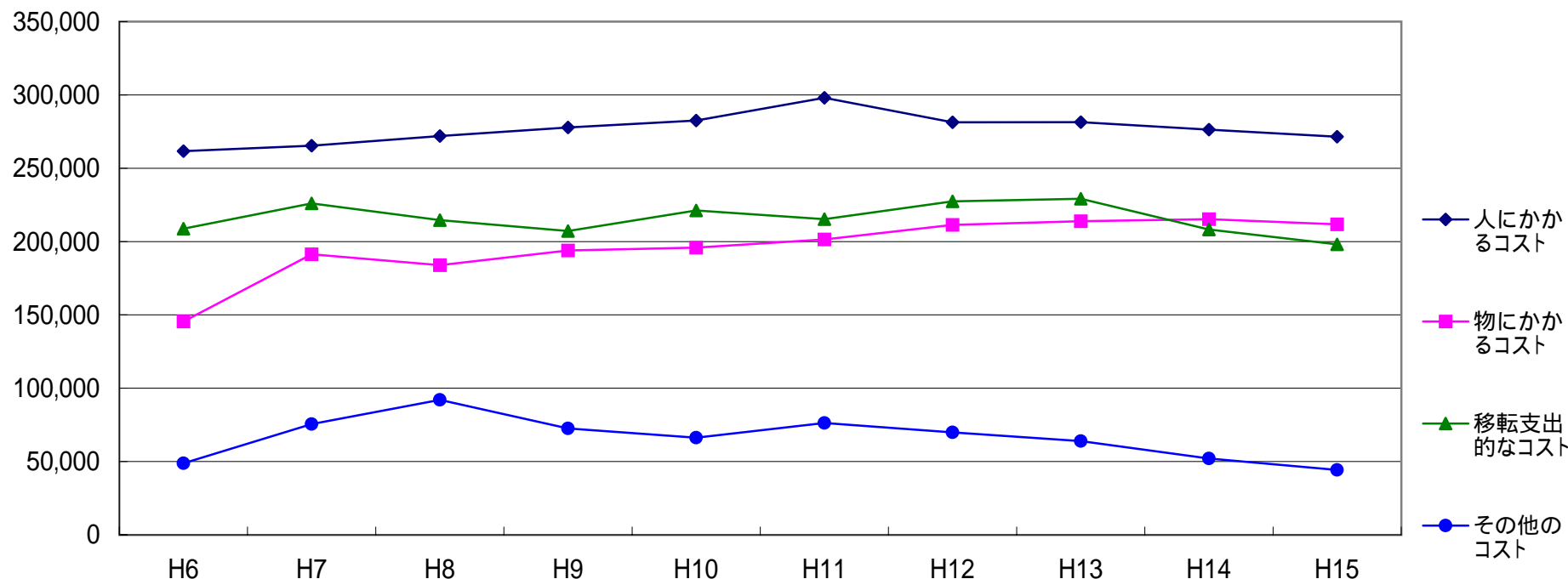


(参考資料7)

性質別行政コストの年度別推移

(単位:百万円)



	H6	H7	H8	H9	H10	H11	H12	H13	H14	H15
人にかかるコスト	261,683 (100.0)	265,353 (101.4)	271,921 (103.9)	277,781 (106.2)	282,512 (108.0)	298,028 (113.9)	281,323 (107.5)	281,461 (107.6)	276,329 (105.6)	271,482 (103.7)
物にかかるコスト	145,495 (100.0)	191,356 (131.5)	183,882 (126.4)	193,933 (133.3)	195,883 (134.6)	201,457 (138.5)	211,351 (145.3)	213,852 (147.0)	215,236 (147.9)	211,723 (145.5)
移転支出的なコスト	208,810 (100.0)	226,069 (108.3)	214,626 (102.8)	207,236 (99.2)	221,247 (106.0)	215,297 (103.1)	227,452 (108.9)	229,148 (109.7)	208,204 (99.7)	198,143 (94.9)
その他のコスト	48,844 (100.0)	75,498 (154.6)	92,003 (188.4)	72,578 (148.6)	66,215 (135.6)	76,318 (156.2)	69,882 (143.1)	63,927 (130.9)	52,092 (106.6)	44,298 (90.7)
合計	664,832 (100.0)	758,276 (114.1)	762,432 (114.7)	751,527 (113.0)	765,858 (115.2)	791,099 (119.0)	790,008 (118.8)	788,388 (118.6)	751,862 (113.1)	725,646 (109.1)